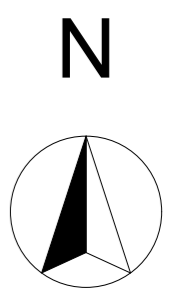
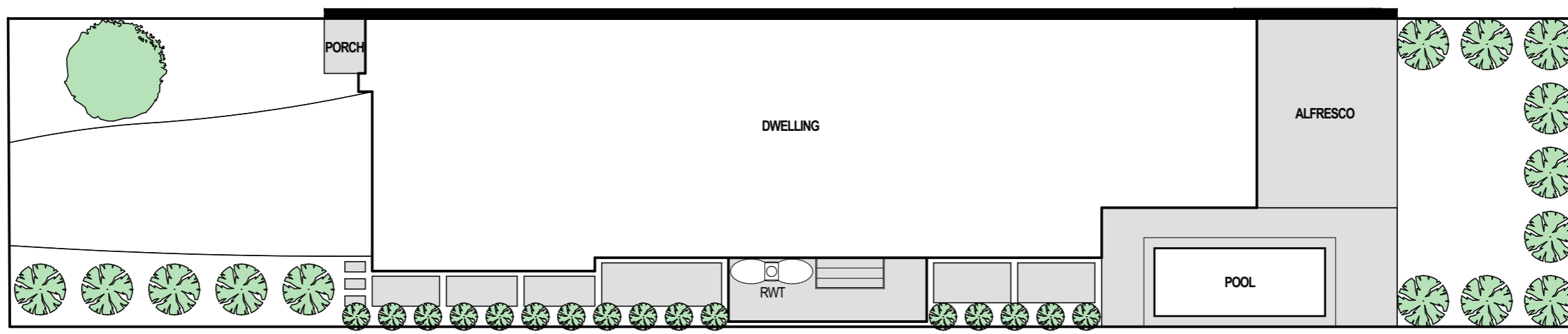
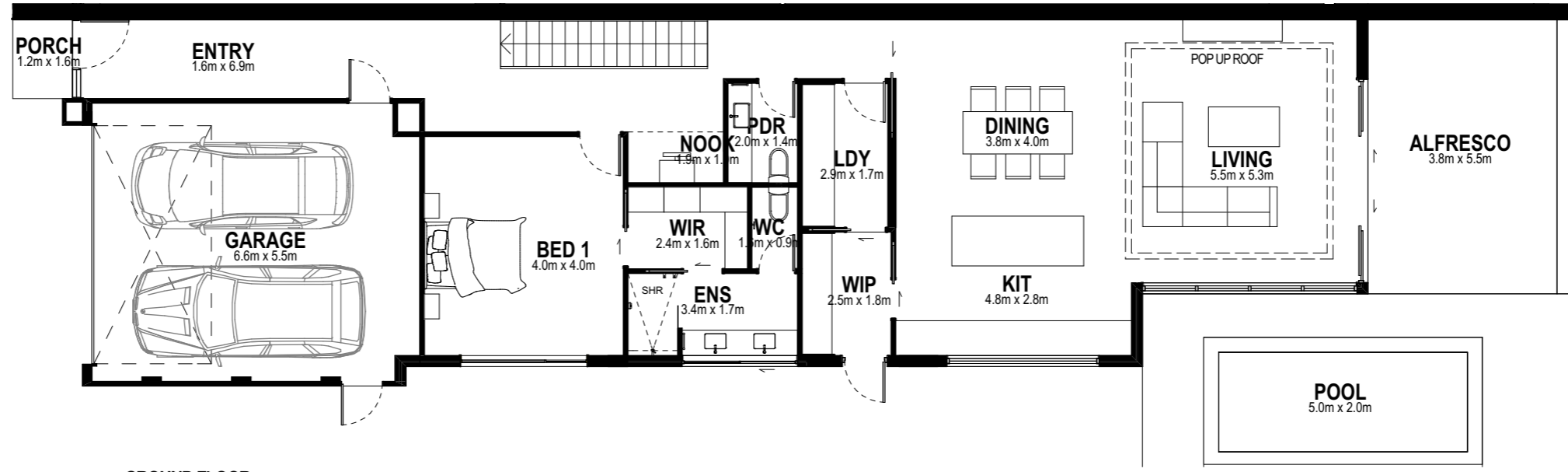
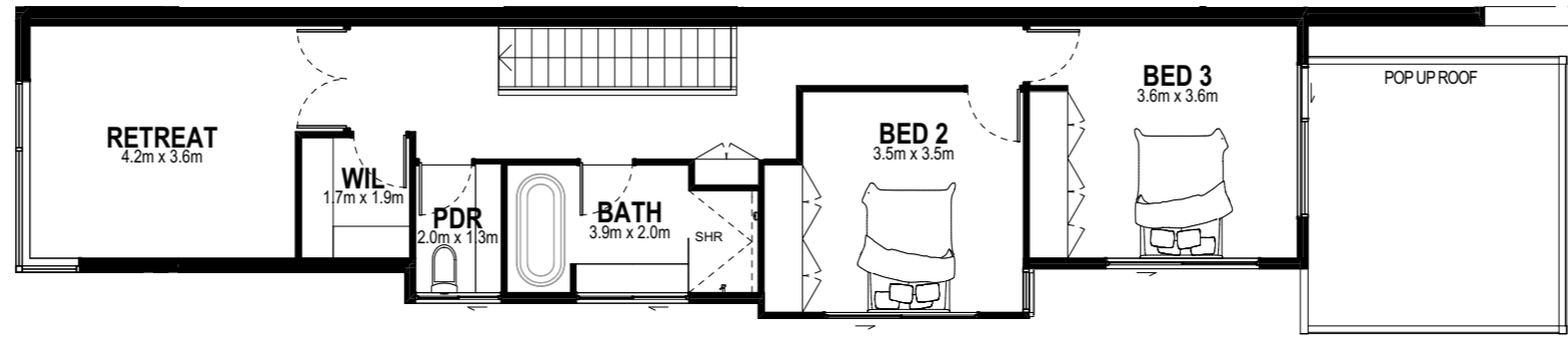


50 SARGOOD ST

AREA SUMMARY:

LAND SIZE:	9.15 x 45.7m, 418m ²
GROUND:	137.05m ²
FIRST:	83.62m ²
GARAGE:	39.70m ²
TOTAL:	260.37m ² / 28sq



These plans are the property of Lowe Design & Build and cannot be reproduced in any form without prior written consent.