

# 15b Foy Avenue, Chelsea

## Area Summary

Total land area: 224m<sup>2</sup>

### Residence:

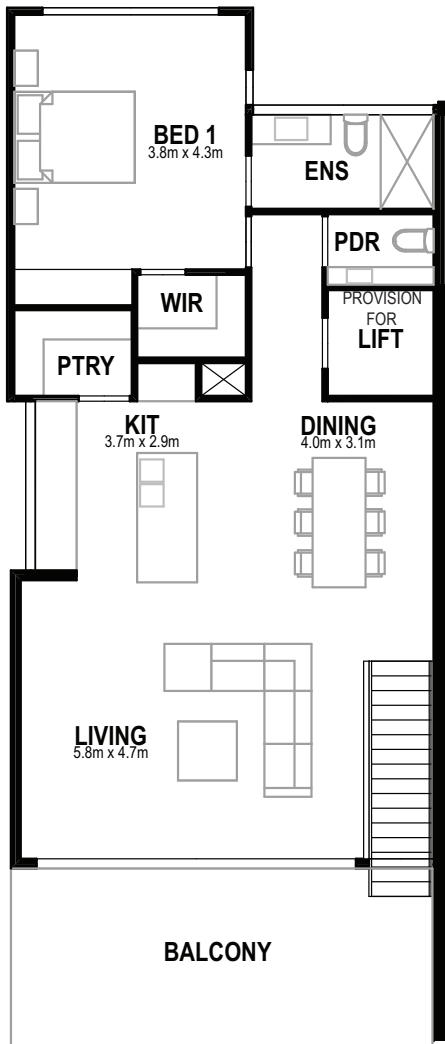
Ground Floor 103.4m<sup>2</sup>

First Floor 101.5m<sup>2</sup>

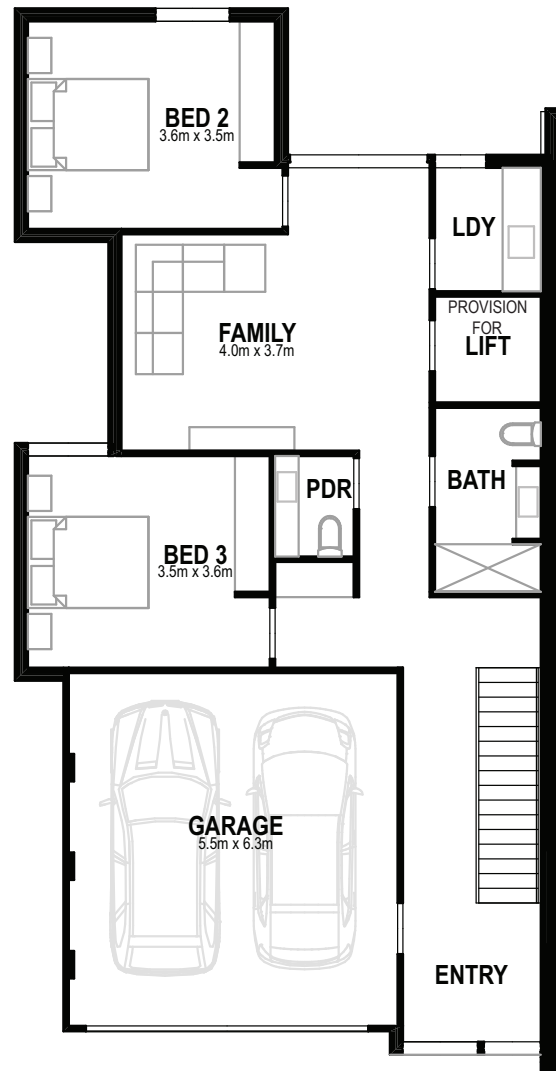
First Floor Balcony 22.7m<sup>2</sup>

Garage 34.5m<sup>2</sup>

TOTAL 261.1m<sup>2</sup> / 28.2sq



First Floor



Ground Floor

PORCH