

## 69b Sims St Sandringham

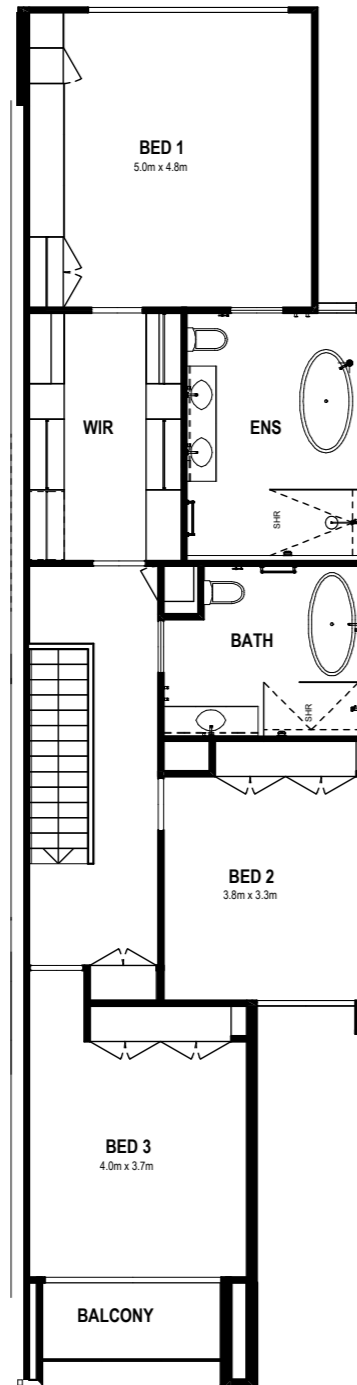
Bedroom	3
Bathroom	2
Powder Room	1
Living	2
Walk in Robe	1
Walk in Pantry	1
Double Garage	1

### Area Summary

Land Size	367m <sup>2</sup>
Ground Floor	133.66m <sup>2</sup>
First Floor	114.47m <sup>2</sup>
Garage	39.93m <sup>2</sup>
<b>TOTAL</b>	<b>288.05m<sup>2</sup> / 31sq</b>

These plans are the property of  
Low Design & Build and cannot be  
reproduced in any form without prior  
written consent.

First Floor



Ground Floor

