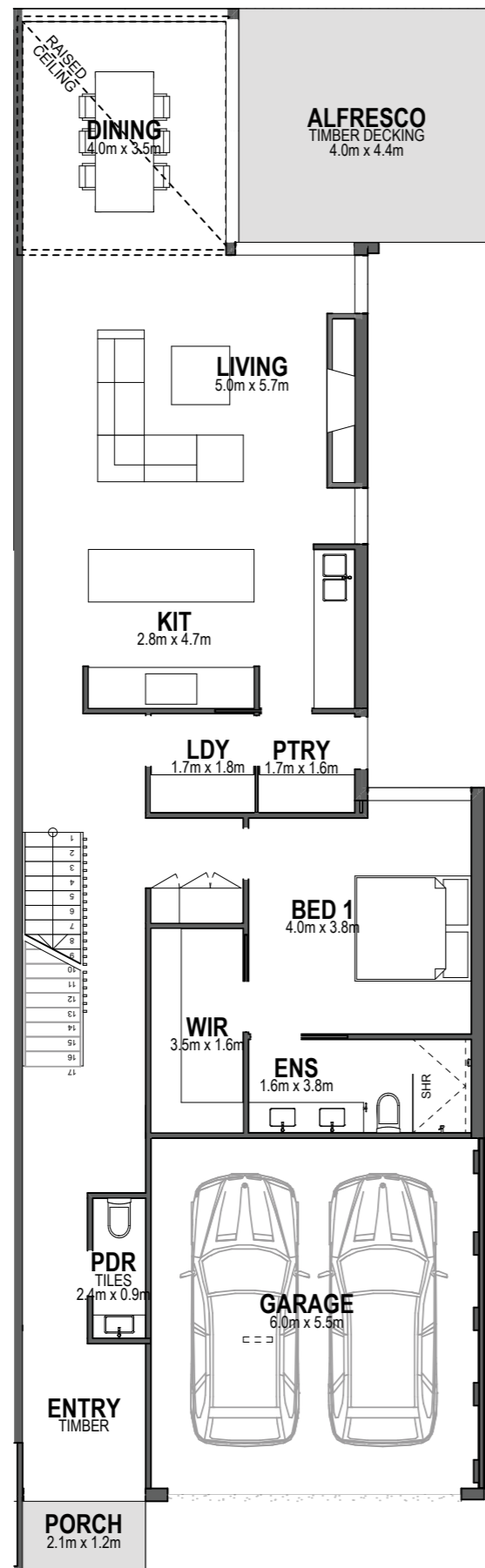


8b Green Parade Sandringham

Ground Floor



First Floor



Bedroom	3
Walk in robe	1
Bathroom	2
Powder Room	2
Living	2
Double Garage	1
Alfresco	1

Area Summary

Ground Floor	134.47m ²
First Floor	82.31m ²
Garage	35.74m ²
TOTAL	252.52m² / 27.18sq

These plans are the property of Lowe Design & Build and cannot be reproduced in any form without prior written consent.