

# 10a Tilley Street Cheltenham

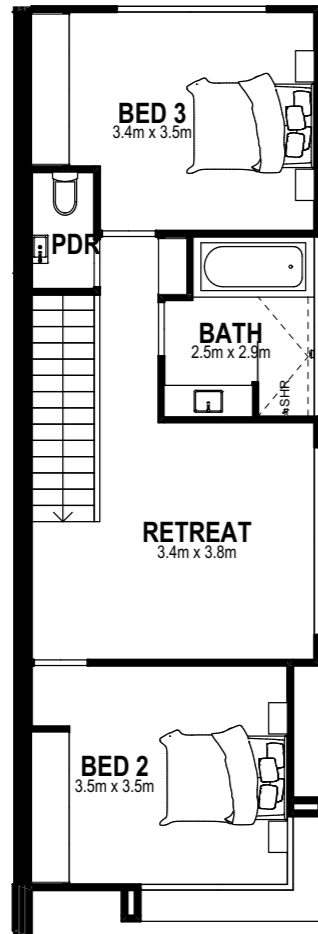
Bedroom	3
Bathroom	2
Powder Room	2
Living	2
Walk in Robe	1
Walk in Pantry	1
Single Garage	1
Alfresco	1

## Area Summary

Land Size	292m <sup>2</sup>
Ground Floor	120.17m <sup>2</sup>
First Floor	65.72m <sup>2</sup>
Garage	24.74m <sup>2</sup>
<b>TOTAL</b>	<b>210.63m<sup>2</sup> / 22.67sq</b>

These plans are the property of  
Lowe Design & Build and cannot be  
reproduced in any form without prior  
written consent.

First Floor



Ground Floor

