

## 8b Monaco Crescent Beaumaris

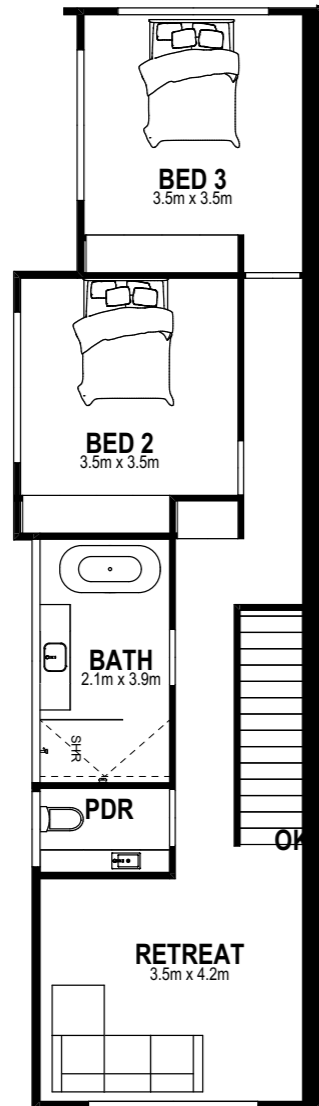
Bedroom	3
Study	1
Bathroom	2
Powder Room	2
Living	2
Walk in Robe	1
Walk in Pantry	1
Single Garage	1
Alfresco	1

### Area Summary

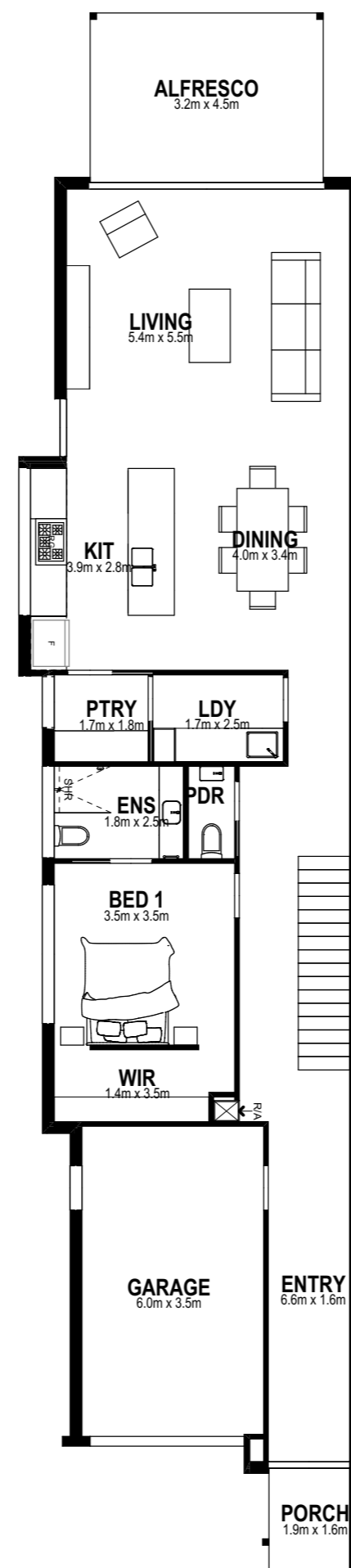
Land Size	299m <sup>2</sup>
Ground Floor	125.20m <sup>2</sup>
First Floor	77.50m <sup>2</sup>
Garage	25.28m <sup>2</sup>
TOTAL	228m <sup>2</sup> / 24sq

These plans are the property of  
Lowe Design & Build and cannot be  
reproduced in any form without prior  
written consent.

First Floor



Ground Floor



Site Plan

