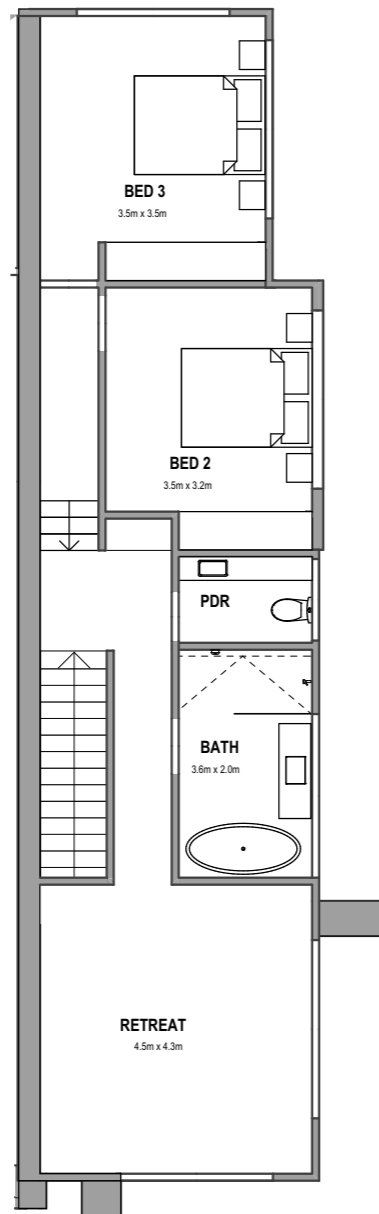
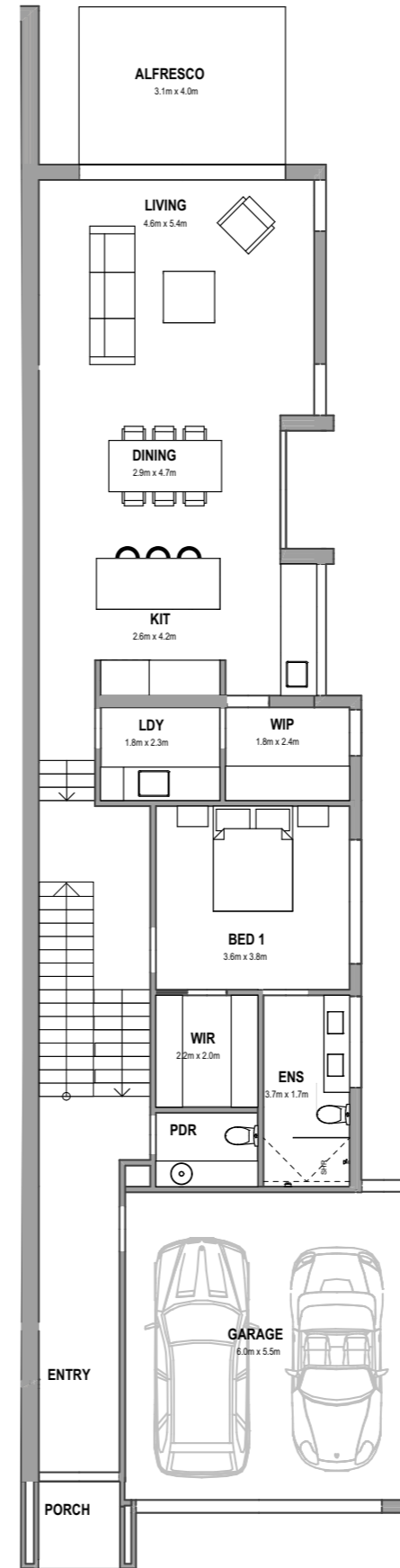


First Floor



Ground Floor



10a Booth Street Parkdale

Bedroom	3
Bathroom	2
Powder Room	2
Living	2
Walk in Robe	1
Walk in Pantry	1
Double Garage	1
Alfresco	1

Area Summary

Land Size	370m ²
Ground Floor	143.21m ²
First Floor	81.55m ²
First Floor Decks	4.86m ²
Garage	38.54m ²
TOTAL	249m ² / 26sq

These plans are the property of
Low Design & Build and cannot be
reproduced in any form without prior
written consent.