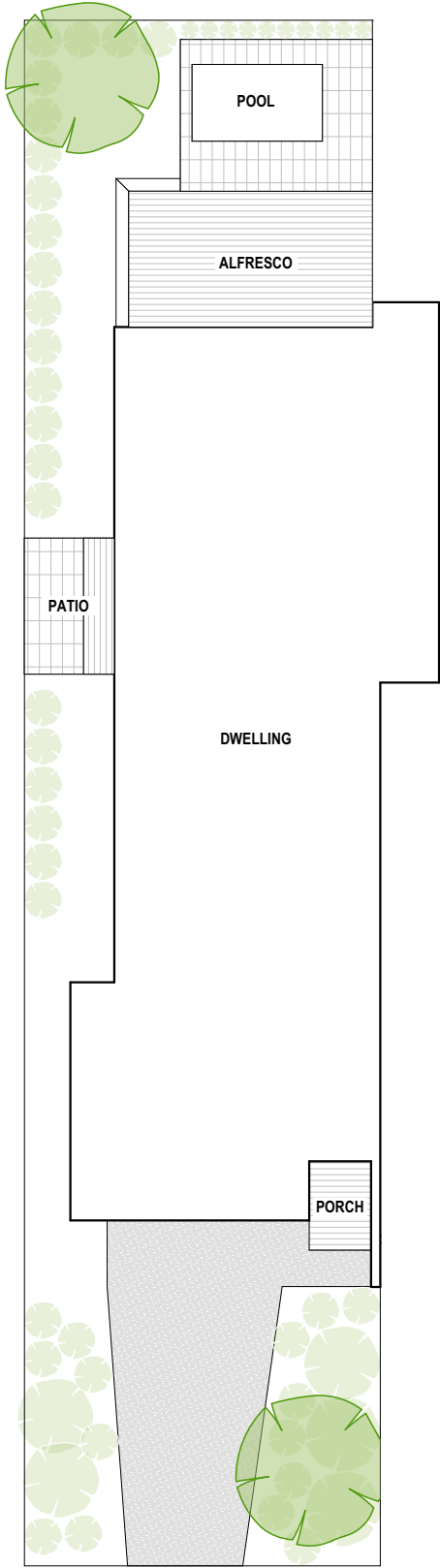
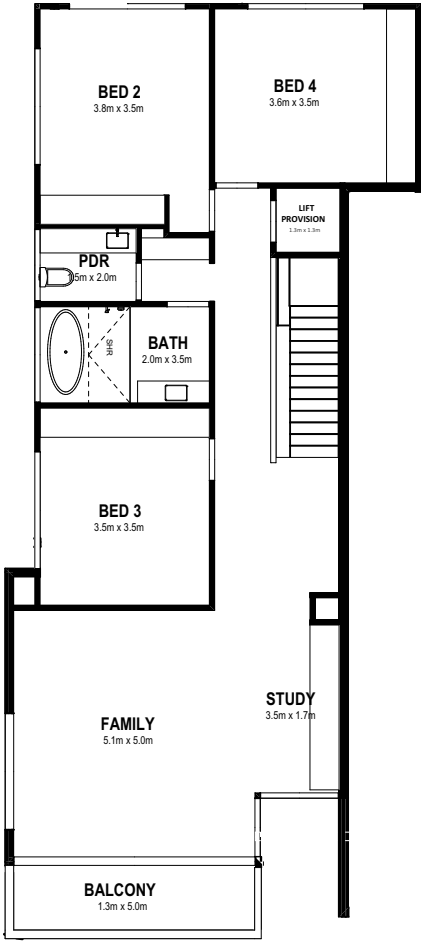


Site Plan



First Floor



Ground Floor



Dwelling 2:  
6a Williams Road  
Mornington

Bedroom	4
Bathroom	2
Powder Room	2
Walk in Pantry	1
Living	2
Double Garage	1
Alfresco	1

Lift Provision  
Planning Permit for a Swimming Pool

Area Summary

Land Size	384.28m <sup>2</sup>
Ground Floor	142.7m <sup>2</sup>
First Floor	121.13m <sup>2</sup>
Garage	37.56m <sup>2</sup>
TOTAL	301.42m <sup>2</sup> / 32.44g

These plans are the property of  
Lowe Design & Build and cannot be  
reproduced in any form without prior  
written consent.