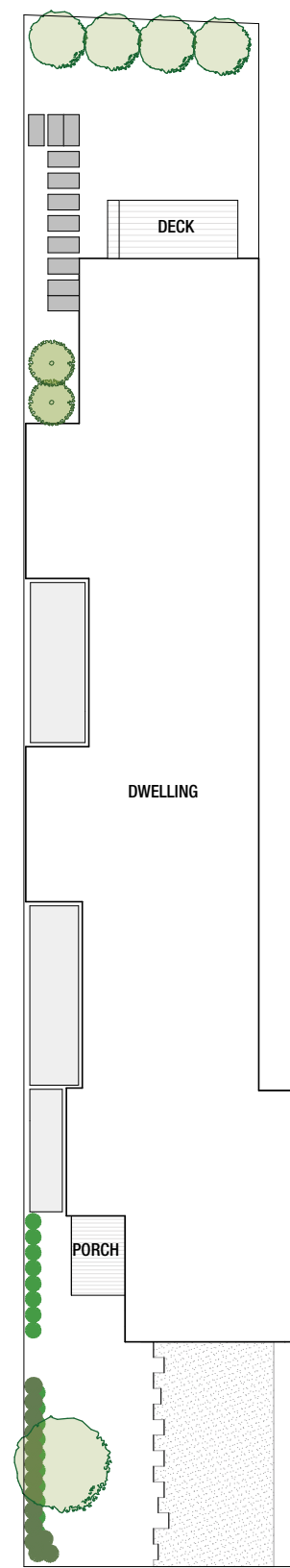
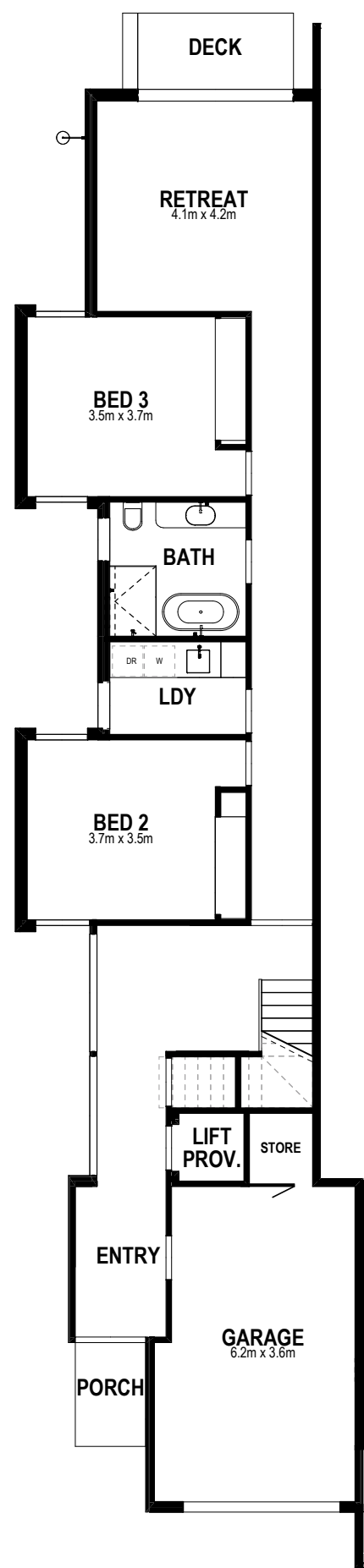


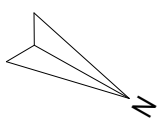
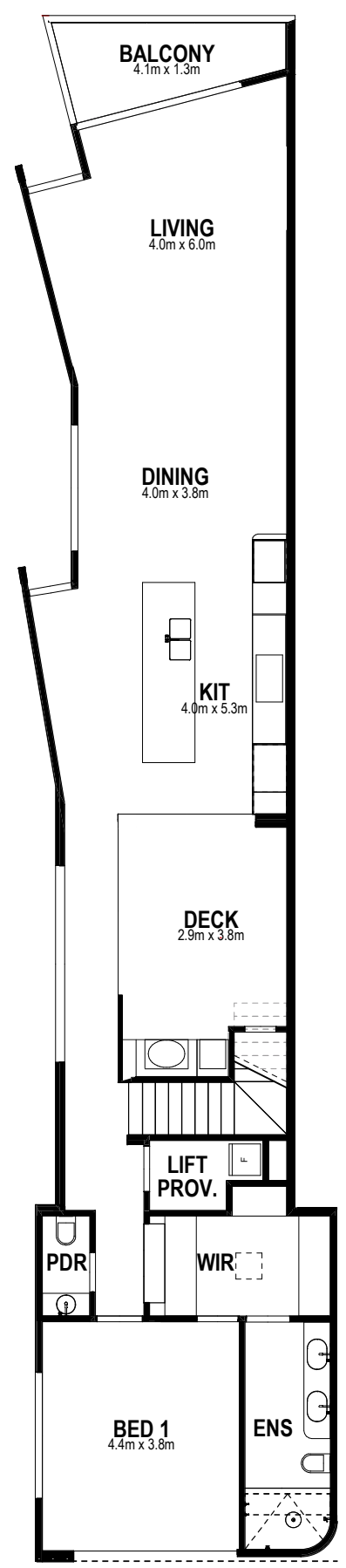
Site Plan



Ground Floor



First Floor



20b Douglas Avenue  
Chelsea

Bedroom	3
Bathroom	2
Powder Room	1
Walk in Robe	1
Living	2
Single Garage	1
Storage Room	1
Deck	2
Balcony	1
Lift Provision	1

Area Summary

Land Size	250.5m <sup>2</sup>
Ground Floor	113.3m <sup>2</sup>
First Floor	122.0m <sup>2</sup>
Garage	27.8m <sup>2</sup>
Balcony	6.2m <sup>2</sup>
Internal Deck	14.9m <sup>2</sup>
TOTAL	284.2m <sup>2</sup> / 30.6sq

These plans are the property of  
Lowe Design & Build and cannot be  
reproduced in any form without prior  
written consent.