



LOWE
DESIGN & BUILD

5b Margate Street
Beaumaris

5b Margate Street Beaumaris



5b Margate Street Beaumaris



A contemporary coastal townhouse in Beaumaris, custom designed for an effortless lifestyle of sophisticated indoor-outdoor living. Located moments from cafés, the beach and parklands, this residence captures the essence of refined, low-maintenance coastal living.

- Offering exceptional privacy and light, the home features main bedrooms on both the ground and first floors, each appointed with built-in robes and dual-vanity ensuites. A third bedroom is serviced by a spacious main bathroom, complemented by a relaxed retreat and dedicated study.
- Flooded with natural light from expansive northern-facing glazing, the entertainer's kitchen with scullery and adjoining dining and living spaces open effortlessly to an alfresco surrounded by lush landscaping.
- A warm, layered interior palette is enhanced by timber throughout, creating a sense of calm and coastal elegance.
- Located in desirable Beaumaris and seamlessly connected by road and rail, this residence offers the ultimate harmony of coastal charm and urban accessibility.
- Purchase Pre Construction to take advantage of generous Stamp Duty savings and the unique opportunity to personalise your home by working closely with our design team.



01

BEAUMARIS, VICTORIA



02

ROYAL MELBOURNE GOLF CLUB

5b Margate Street Beaumaris

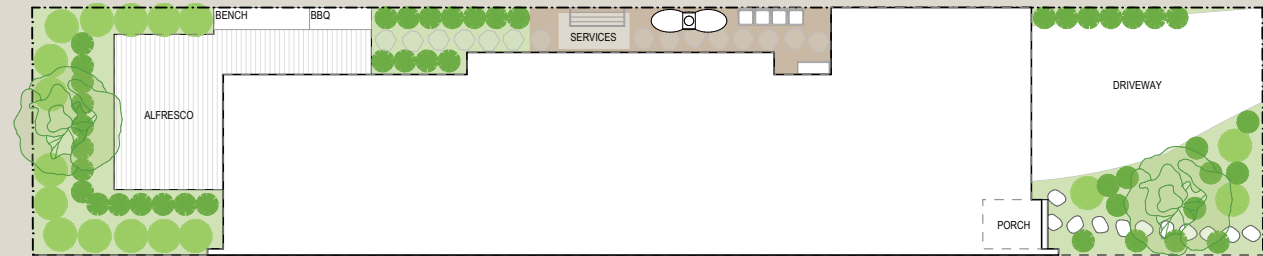
Bedrooms	3
Bathrooms	3
Alfresco	1
Living	2
Scullery	1
Study	1
Garage	2

Area Summary

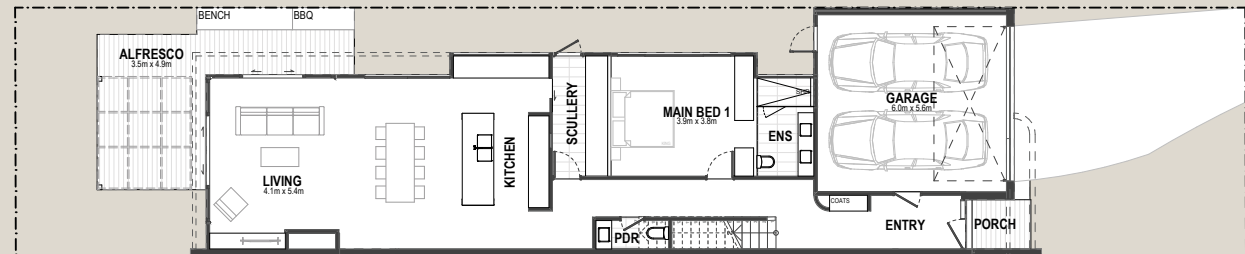
Land area:	306m ²
Ground Floor:	125.98m ²
First Floor:	92.85m ²
Garage:	36.45m ²
Total:	255.281m ² 27 sq

Customisation

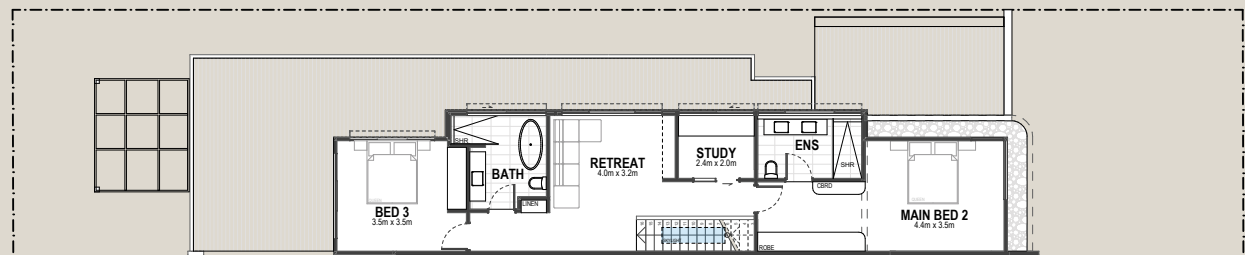
Purchasing Pre Construction offers the unique opportunity to personalise your future residence. With guidance from our in-house design team, you can select preferred fixtures, finishes, and consider small layout adjustments to better suit your lifestyle.



SITE PLAN



GROUND FLOOR



FIRST FLOOR



5b Margate Street Beaumaris



Design Features

- Contemporary coastal facade with timber-look batten detailing and feature curves
- Lockwood architectural door hardware
- Premium, wide plank pre-finished engineered timber flooring
- Main bedrooms on both levels feature built-in robes and dual-vanity ensuites
- Full height windows to open plan living, kitchen and dining
- First floor dedicated study
- 100% wool carpet
- NewTechWood decking to alfresco
- Ceiling Heights: 2720mm Ground Floor; 2720mm First Floor

Kitchen

- Fisher & Paykel 90cm induction cooktop and 60cm built-in pyrolytic oven
- Caesarstone benchtops throughout including Caesarstone splashback
- Undermount stainless steel kitchen and scullery sinks
- Provision for integrated Fisher & Paykel fridge freezer and built-in beverage centre
- Bespoke, custom-made cabinetry throughout, featuring Blum soft-close drawers
- Polytec 'Chifley' profile cabinetry
- Scullery

Bathrooms

- Fully tiled porcelain bathrooms
- Freestanding bath in main bathroom
- Dual-vanity ensuites to ground and first floor main bedrooms.
- Generous showers with frameless glass
- Concealed toilet cisterns throughout
- Integrated shower recess

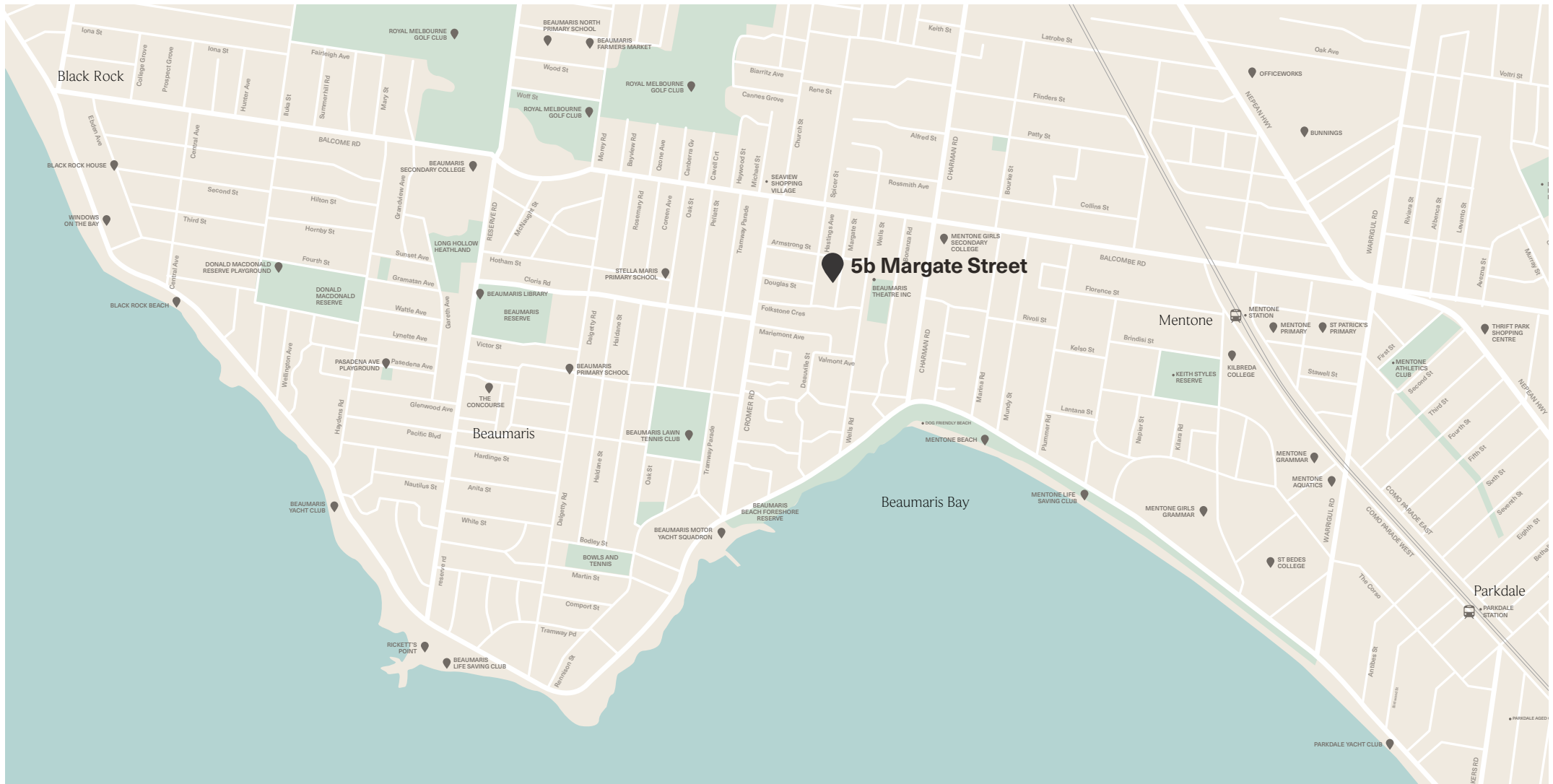
Property Features

- Fully landscaped
- Secure double garage
- Integrated home technology including video intercom
- 7 star energy rating
- Covered by a 10 Year Builder's Warranty

Set along a serene shoreline, Beaumaris is one of Melbourne's most sought-after coastal enclaves. With excellent city connections via road and rail, alongside vibrant local amenities and cafés, it delivers a refined and effortless byside lifestyle.

Location

Melbourne CBD	22.3KM
Seaview Shopping Village	500M
Beaumaris Concourse	1.9KM
Mentone Beach	1KM
Mentone Station/Village	1.8KM





Leading Design.
Exceptional Finish.

G1, 459 Main Street
Mordialloc VIC 3195

9587 8400

info@lowedesignbuild.com.au

lowedesignbuild.com.au